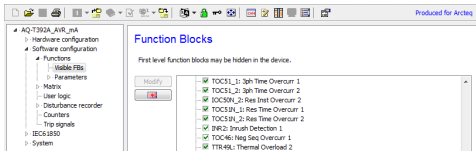


AQtivate 300 setting and configuration tool



AQtivate 300 is a setting and configuration tool package for AQ-300 series products.

- IED setting and configuration
- User-level password protection
- Online and offline editing of IED configurations
- Uploading and downloading of data
- A connection through Ethernet (ports on both front and rear panels)

The AQtivate 300 tool can be downloaded from Arcteq's website (Home -> Documents & Downloads -> AQ-300 series) free of charge.

Technical Data

[No technicaldata found.](#)

Application Drawing

